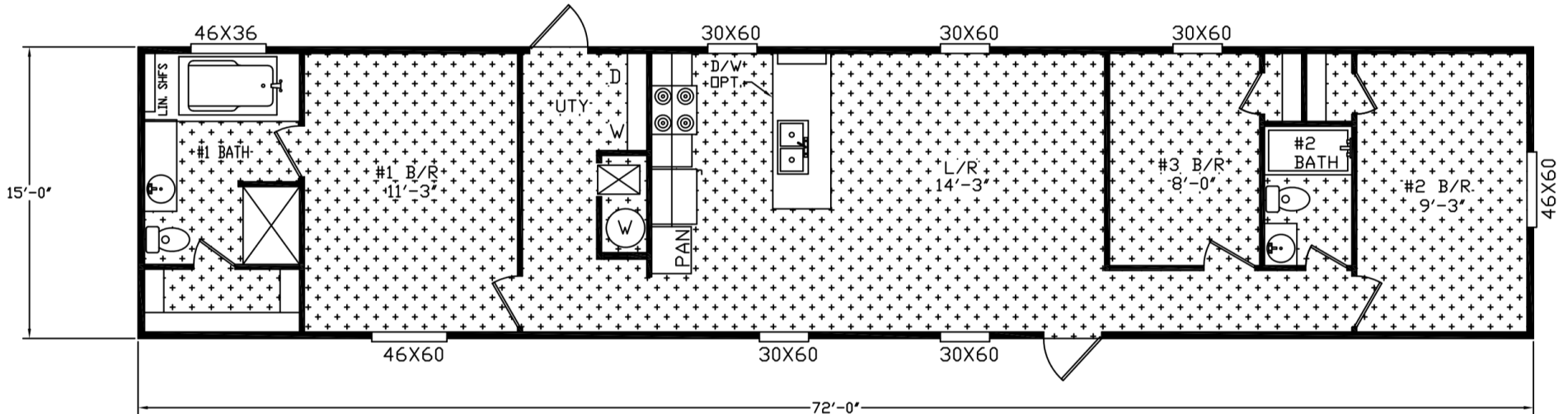


# COMMUNITY SERIES

# Hodges MODEL 167232D



**3 BEDROOMS | 2 BATHROOMS | 1,080 SQUARE FEET**

For detailed information about this model or any other model, please visit us at [www.HamiltonHB.com/OurHomes](http://www.HamiltonHB.com/OurHomes)

**DISCLAIMER:** Because we are continually updating our products and process, the plans, dimensions, materials, features and other specifications shown here are subject to change without notice or obligation. Please refer to working drawings for actual dimensions. Renderings and floor plans are artist's depictions only and may vary from the completed home. Room dimensions and square footage calculations are approximate subject to industry standards. Some features shown are optional.



**HAMILTON**  
HOMEBUILDERS

**Crafted with Pride.**

[www.HamiltonHB.com](http://www.HamiltonHB.com)

# Standards & Features

## STANDARDS

- HUD COD
- 20 LB ROOF LOAD
- THERMAL ZONE II
- WIND ZONE I

## FRAME

- SOLID I BEAM
- OUTRIGGERS 96"
- CROSSMEMBERS 96"
- BRAKE AXLES: ONE
- DETACHABLE HITCH

## FLOOR

- JOIST: 2X6 / 19.2" O.C.
- DECKING: 19/32" OSB
- LINO: BEAU FLOR
- CARPET: PER PRINT 16OZ

## EXTERIOR

- 8' SIDEWALL
- VINYL SIDING
- HOUSE WRAP BEHIND VINYL
- WOODBACKER BEHIND VINYL
- 29 GAUGE POWER RIB METAL ROOF

## WINDOWS/DOORS

- THERMAL PANE WINDOWS
- 36X80 STEEL DOOR FRONT AND BACK
- TWO PANEL INTERIOR DOORS

## ROOF/CEILING

- TRUSSES 24" O.C.
- INSULATION: BLOWN FIBERGLASS
- STOMPED CEILING
- 8' FLAT

## HVAC

- FURNACE: ELECTRIC
- DUCTWORK: METAL

## PLUMBING

- WATER HEATER 30 GALLON
- KITCHEN SINK: DOUBLE BOWL
- LAVATORY SINKS: PLASTIC
- FIBERGLASS SHOWER/TUB w/WALLS
- CUT-OFF VALVES
- WHOLE HOUSE CUT-OFF

## ELECTRICAL

- 200 AMP SERVICE

- EXTERIOR RECEPTACLE
- RECESSED LIGHTS T/O 4"
- LED CEILING FAN IN LR
- EXTERIOR WALLS: 2X4 16' O.C.
- INTERIOR WALLS: 2.X 24" O.C.
- WALL COVERINGS: 3/8" PAPER ON GYP

## INTERIOR

- CABINETS MDF / 42" TALL OVERHEADS
- CABINETS: WHITE LINED OVERHEADS
- COUNTERTOPS: ROLLED EDGE W/ BACKSPLASH IN KIT AND M. BATH
- 10" CABINET PULL BARS IN KITCHEN
- 6" CABINET PULL BARS IN BATHS
- RTA CABINET DRAWER SYSTEM
- CLOSET SHELVING VINYL WRAPPED
- UTILITY SHELF AT W/D AREA

## APPLIANCES

- REFER: 18' BLACK
- RANGE: 30' ELECTRIC BLACK

## MOLDINGS

- 2" FLAT AT CEILING/DOORS/WINDOWS



**Crafted with Pride.**

**[www.HamiltonHB.com](http://www.HamiltonHB.com)**